

BETHLEHEM STAR

Grace to you all and peace, in the name of God our Creator and our Savior, Jesus Christ. Amen.

We have some exciting things happening at Bethlehem!

First of all, our new Director of Children, Youth, and Family Ministries is officially starting with us on July 1st! Her name is Sarah Rhodes - please read through the newsletter to find her brief letter of introduction. Also, please introduce yourself to her either on a Sunday morning, or stop by during the week and pop into her office (which will be the room directly next to mine). And please pray for our children, youth, and family ministry.

Second, our Congregational Council started to do the early stages of visioning for the future of our congregation. We brainstormed out strengths, areas of opportunity, and what is central to our identity. We'll continue to look to the future of our congregation and where God might be calling us to go together. Please pray for your Council.

Finally, the BLCW met about our hospitality ministry at Bethlehem and we have an exciting and inclusive vision for the future. Sharing a meal or treats together has been foundational for our gatherings at Bethlehem, because we know how important it is to eat together. Check out the article in this newsletter about our hospitality ministry for more information about our hospitality ministry.

As I continue to serve as your pastor, and as I complete my first full year of ministry, I'm filled with gratitude that God called Ashley and I here. Thank you for calling me to be your pastor - I'm looking forward to many years of worshipping God and serving our community together.

Peace in Christ, Pastor Calvin Konop

WEDNESDAY VOLUNTEER APPRECIATION PICNIC



On Sunday June 16th we celebrated all of the wonderful volunteers that make our Wednesday Worship, Meals and Confirmation Classes a success during the school year, as well as our Sunday School Teachers. Thank you to all the musicians, chefs & kitchen helpers, and teachers who volunteer their time and talents. Blessings to all of you!

Bible & Brews!

A "splash" hit! Every Wednesday evening during the summer. 7:00pm at Voyager Brewing. Bring your Bible questions and join the discussion/fun!





Devotions

By Pastor Calvin Konop

Let us therefore approach the throne of grace with boldness so that we may receive mercy and find grace to help in time of need. Hebrews 4:16

The Book of Hebrews is a powerful book, much of it centered on the gift of faith we have been given in God. It's also a book that was likely written by a woman - Priscilla, a Roman Christian, missionary, teacher, and partner with Paul and Timothy.

Whoever the author is, they write that we are to approach the throne of grace with boldness. Not timidly or with great trembling, but boldly.

I wonder...

- How often do we think that we shouldn't ask for prayer because others have it worse off?
- How often do we think God has bigger and better things to do?
- How often do we think we shouldn't ask for things because God might have something different in mind?

Rather than assuming these things about God, we are encouraged to go before God **boldly**. God is a God who is big enough to hear everyone on the planet praying at the same time; big enough to care deeply, entirely, and uniquely about each person; big enough to be at work in the life of every single person on the planet.

Folks, God cares about **you**. God wants to hear from you, and God is at work in your life. So go before God boldly in prayer, knowing that God hears your prayers, and is working in and through them.

Bethlehem Lutheran Church Women (BLCW) & Hospitality Ministry

The BLCW met in mid June to talk about the future of our hospitality ministry at Bethlehem. Throughout the decades, the BLCW and many volunteers have made luncheons at funerals happen (among many other meals and times of coffee and treats). This is an important ministry of coming alongside families who are in grief and giving them a time to eat together with their family and friends, to share stories and memories of their loved ones, and to rest and fill their bellies in a safe place during their time of grief.

Many of the women who are active in the BLCW have been serving in this capacity for many years - but now our numbers have (are) dwindled.

We know that there are many in this congregation who have Spirit given gifts of hospitality - people of all sexes and gender expressions - and who want to be a part of this ministry.

This August we will be recruiting people to be a part of a hospitality team to help to make funeral luncheons possible for families. These teams will be large enough so that members of the team will be able to serve as they are able, and rely on their team if they need to miss.

We'll be giving more information throughout this month, and starting to invite people to be a part of this ministry in August. In the meantime, prayerfully consider if God is calling you to share your gift of hospitality to people in our church who are grieving.

-Pastor Calvin and the BLCW



In God's Care

Church Council has been busy. We have recruited a team to support Bruce Johnson on the Cemetery Committee. It now takes 5 people to do what Bruce did by himself. Joining in the effort are: Pastor Calvin, Shawn Swearingen, Chet Lindskog, Kyle Oberg and Mark Youngdahl.

The Employee Handbook Committee has reviewed and updated the book to reflect Bethlehem's needs and guidelines in accordance with Synod policy. It will be presented to the Council at the July meeting for approval.

The 125th Anniversary committee has met twice and recommended Sunday September 22nd for the date of our celebration. We have the Council approval to contract with DD catering for a dinner meal. We intend to hold the event at Bethlehem, versus renting the Community Center.

Pastor Calvin and Denise (Office Manager) met with BLCW members to review our policies for funeral gatherings. We know that providing a time for the family to be together for fellowship after the service is very important. As the usual service providers are getting older and fewer we decided to create a group of Hospitality Workers, men and women, who could share in the effort.

We will have a new face in administration at Bethlehem. Sarah Rhodes has accepted our position of CYF Director. She has an office just down the hall from Denise and Pastor Calvin. Her first day is July 1st. Welcome Sarah!

That's all for now.

In God's Care,

Kris Hedstrom, Congregational President

Cook County Food Shelf



Thank you Bethlehem Lutheran members for continuing to support the Cook County Food Shelf by bringing food and bags to use at the food shelf. I've not been able to be so diligent in keeping up with your generosity, but am truly grateful for the food supplies. **The food shelf has had some issues in obtaining some staples that we always have on hand when people need food.** Your food donations help with that, so thank you!

Volunteering is also an issue during the summer months. I've been a volunteer coordinator for about 20 or so years, with its ups and downs. During the summer months, people ARE busy! BUT.....If you have time and an inclination to help, give me a call. Gwen Lenz 218 -387-9860. Once a month is all I'll ask of you.

Many gifts, coming together

Paul in Romans 12 is writing to a church that was still new. People were only just beginning to learn what it meant to follow Christ in community with people from Jewish and Gentile backgrounds. Conflicts were bubbling up. People were finding it hard to come together. (Does any of this sound particularly apt for our own modern times?)

So, when Paul says, "Do not be conformed to this word, but be transformed by the renewing of your minds, so that you may discern what is the will of God – what is good and acceptable and perfect," he is speaking to a community that is still trying to learn how to best get along with one another.

Paul reminds the Romans that we each are gifted with skills and talents that not only benefit our community, but that are needed. "We have gifts that differ according to the grace given to us," he writes. We each have our own unique way to "contribute to the saints" or to "extend hospitality to strangers."

This message is excerpted from the Bible study "Serving with Zeal" by Sara Carson in the May/June 2023 Gather magazine.



Mission of the Month

LUTHERAN WORLD RELIEF



The Church in Society committee has decided it is a good time to reach out beyond the North Shore for our July Mission of the Month. Our July donations will be given to **Lutheran World Relief** for their humanitarian assistance program for the people of South Sudan. It is estimated that over 70% of the population is in need, with more than 6 million people experiencing crisis level food insecurity. The country has had over a decade of violent conflict, civil war, and political instability. Both drought and flooding have also fueled the food crisis. One third of the population, an estimated 4 million people, are displaced.

Lutheran World Relief has been working in South Sudan since 2012. They now provide livelihood support for internally displaced people as well as Sudanese refugees who have fled to neighboring countries. Addressing the food crisis, Lutheran World Relief provides critical aid to families, especially young children, who are severely malnourished. It is our privilege to help our neighbors across the world in East Africa through Lutheran World Relief; a trusted organization grounded in Lutheran theology with decades of experience tackling global poverty.



GRAND MARAIS LIONS CLUB

The Grand Marais Lions Club is soliciting nominations for **Citizen of the Year** to be awarded on Saturday, August 3, 2024, during Fisherman's Picnic. Nominations are due by 5:00 pm Friday, July 5, 2024. Further information and a nomination form can be obtained by emailing barbb@boreal.org.

Bible & Brews!

Greetings Bethlehem from Ashley Konop!

We are officially in the Summer season which means Bibles and Brews is officially underway. Each Wednesday I look forward to diving into topics that I get to discuss in a safe place with people I trust and respect.



So far we've tackled conversations about Juneteenth and our duty as Christians to racial reconciliation. We've discussed different denominations and where we all align, and last night we dug into Genesis 11 and the Tower of Babel. Nothing is off limits!

It has been a joy to see people come together and share different perspectives over a cold brewski (and usually cheese curds). What I love about the community of Bethlehem is that though opinions may differ, we all respect each other and make Bibles and Brews a safe and open place. I so look forward to each Wednesday night this summer and sincerely hope you can join us.

New Partnership with Spirit of the Wilderness

Our neighbors, Spirit of the Wilderness Episcopal Church, has called a new Priest, the Reverend Peggy Schnack. Peggy is part time, living in the Twin Cities area and coming up **for 2 weekends a month, and spending a week or**

more up here between weekends. We are partnering with Peggy and Spirit of the Wilderness to share office space. Peggy will be officing out of our Sacristy, where we have a desk and bookshelves, to make her stays easier. She'll keep some of her office belongings up here, so we'll start keeping the Sacristy door locked for her privacy and safety.

The ELCA and the Episcopal Church have a theological agreement named "Called to Common Mission," meaning that we have full communion with the Episcopal Church - so our partnership is natural and exciting.

We'll publish Peggy's office weeks in our correspondences with you so that you all know when Peggy will be in town and using the Sacristy for her office space. She will also have a mailbox outside of the office area downstairs. Please welcome Peggy to Grand Marais and to the Bethlehem building!

If you have any questions, please contact Pastor Calvin. Thanks!



Worship, Music & the Average Worship Band

"Speak to one another with psalms, hymns, and spiritual songs. Sing and make music in your heart to the Lord, always giving thanks to God the Father for everything, in the name of our Lord Jesus Christ." Ephesians 5:19-20

Why do we go to church to worship? We gather together as the members of the body of Christ to talk to God collectively. Worship in the midst of the community of faith reminds us we are not alone. We gather as a family, as the living

body of Christ to remind ourselves and others of the truths that sin can cause us to forget: we are loved, we are forgiven, and we are not alone when we experience the struggles of life.



You are invited to join us in the planning and leading of our worship services. Along with the Wednesday evening services during the school year, the Average Worship Band helps lead services on the 4th Sunday of each month. You do not have to be a singer or musician to be a part of our team but if you are we would love to have you! Perhaps you like to write prayers based on the scripture lessons? Do you have a special litany you would like to share? Are you a dancer who wants to incorporate liturgical dance into a service? Do you have computer skills and want to help with the slide projection for the service? You are invited to share your gift with us! Let Denise (Office 218-387-2227), Mark Abrahamson (218-370-2268) or myself know how you would like to share your gifts and we will get you connected!

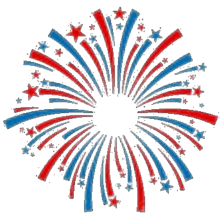
- Stacey Johnson, 218-370-9441

to

"Nostalgia can be a file that removes the rough edges from the Good Old Days."

Keeping prayers at hand, is mighty helpful too.

Membership Committee
Bethlehem Lutheran Church



JULY

2024

Sunday	Monday	Tuesday	Wednesday	Thursday	Friday	Saturday
30 Set up for Saethre Memorial Service 10:00am Worship Service - Live streamed 3:00pm Strikepoint Handbell Concert	1 9:00am Staff Meeting 1:00pm Delores Saethre's Memorial Service	2	3 Overnight group (Pastor Calvin) 8:00am Church In Society meeting 12:30pm Mid-Day Mid-Week Bible Study 7:00pm Bible & Brews	4 Holiday - Office is Closed 8:00am Bible Study 	5 Clarity Hearing Appts. Holiday Extension - Office closed	6
7 8:40am Choir Practice 10:00am Worship with Live stream & Choir sings	8 9:00am Staff Meeting 6:30pm Executive Committee Mtg	9	10 12:30pm Mid-Day Mid-Week Bible Study 6:30pm Youth Event - Meet Sarah, CYF Director 7:00pm Bible & Brews	11 Monthly Council Reports due to Office 8:00am Bible Study 9:00am Quilting	12 Monthly Reports to Council for review	13
14 Jazz Service ?? 10:00am Worship Service - Live streamed	15 8:00am Monthly Reports: Additions & Corrections Due 9:00am Staff Meeting 6:30pm Church Council Meeting	16 6:30pm Worship Planning Committee	17 12:30pm Mid-Day Mid-Week Bible Study 7:00pm Bible & Brews Overnight group	18 8:00am Bible Study 9:00am Quilting	19 Clarity Hearing Appts.	20
21 8:40am Choir practice 10:00am Worship - Live streamed with Choir 2:00pm Care Center Worship Service	22 Newsletter articles due for next edition 9:00am Staff Meeting	23	24 12:30pm Mid-Day Mid-Week Bible Study 7:00pm Bible & Brews	25 Pastor Calvin's Vacation 8:00am Bible Study 9:00am Quilting	26 Pastor Calvin's Vacation	27 Pastor Calvin's Vacation
28 Pastor Calvin's Vacation 10:00am Christian Contemporary Worship Service with the "Average Worship Band"	29 9:00am Staff Meeting	30	31 12:30pm Mid-Day Mid-Week Bible Study 7:00pm Bible & Brews	1 8:00am Bible Study 9:00am Quilting	2 Clarity Hearing Appts.	3



JAZZ WORSHIP SERVICE IS TENTATIVELY SCHEDULED FOR SUNDAY JULY 14TH. WATCH FOR NEWS TO COME.

5655877

Bethlehem Lutheran Church

417 First Avenue West

PO Box 638

Grand Marais, MN 55604

218.387.2227

blc@boreal.org; blcpastor@boreal.org; blcyouth@boreal.org

www.sharingchrist.org

Non Profit Org.

US Postage Paid

Permit #3

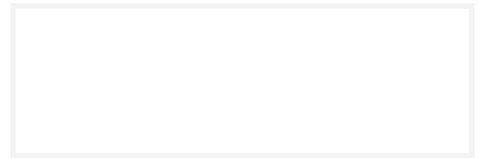
Grand Marais, MN

55604

Belonging to Christ,

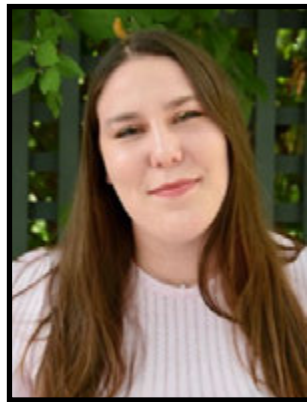
Sharing Christ on the

North Shore and beyond.



Introducing Sarah Rhodes

Hi youth and families of Bethlehem Lutheran! My name is Sarah Rhodes, and I am the new CYF Director. I'm from Excelsior, Minnesota and I graduated this spring from St. Olaf College. I have completed my Bachelor's in religion, and am one online course away from achieving my BA in math.



I am so excited to learn and grow with you, and to serve as one of your mentors as we all move forward on our faith journeys. I'm open to your ideas for the next school year, such as games we could play, Lutheran concepts you'd like to learn about, and trips we could take. I could not be more eager to call Grand Marais home, and I can't wait to meet you!

Meet Sarah Rhodes.

Director of CYF Ministries

Wednesday, July 10th at 6-30pm

If you're a **middle school or high school student**, please come to church on **Wednesday, July 10th at 6:30pm-7:30pm** to meet **Sarah Rhodes**, our new **Director of CYF Ministry**.

There will be treats, and maybe even some smores, so come having eaten dinner, but still a little hungry. We'll play some games, get to know each other, and have a devotional and prayer to close out time together. We hope to see you on the 10th at 6:30pm! Dress for the weather.